

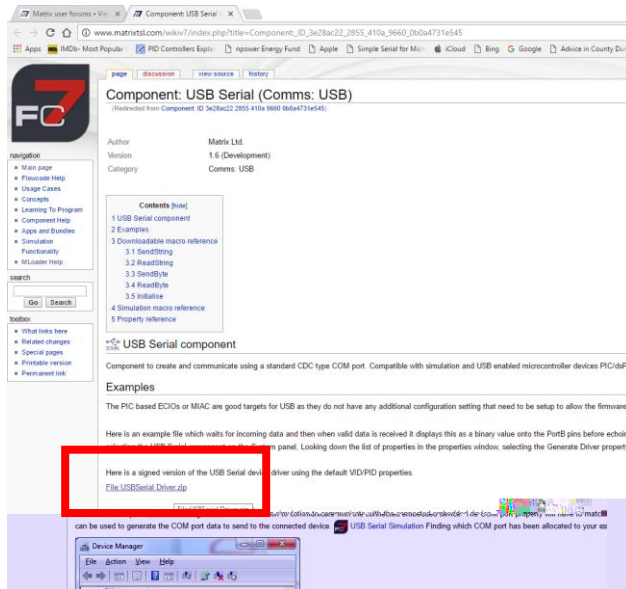
# Serial USB Set up Guide

## Windows 10 – New Builds 1607 (Post Aug 2016)

### Step 1 – Download and install Driver – before connecting your PIC USB hardware

You will find the driver here:

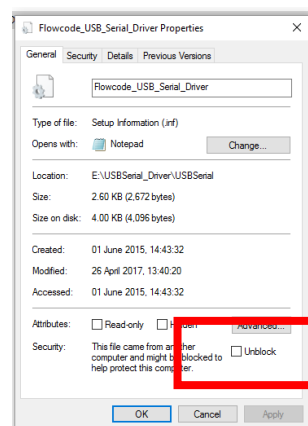
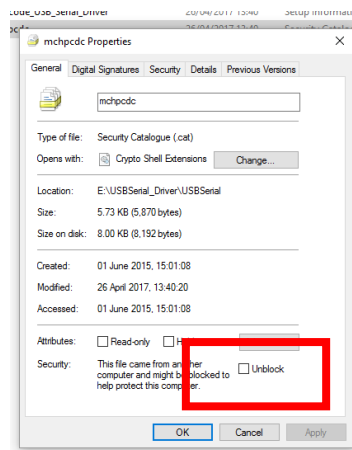
[https://www.matrixsl.com/wikiv7/index.php?title=Component: USB Serial \(Comms: USB\)](https://www.matrixsl.com/wikiv7/index.php?title=Component: USB Serial (Comms: USB))



Download and unzip the file to a suitable folder on your hard drive.

### Step 2 – 1<sup>st</sup> - Install the Security Catalogue (.cat) **mchpcdc.cat**

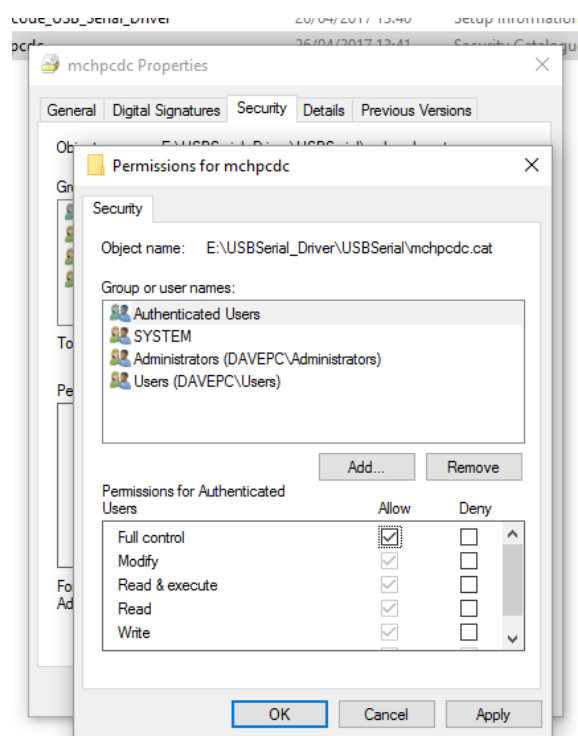
The driver is signed by the Security Catalogue file (**mchpcdc.cat**), the Catalogue needs to be installed first. **BOTH** files are **BLOCKED** by default as shown here:



Starting with the file - **mchpcdc.cat**. Tick the box to unblock the file and then click **Apply**.

## How to Install the unblocked file - *mchpcdc.cat*

The file permissions **MUST** be changed. Select – **Security**.



Select **Edit** and change the following:

**Authenticated Users** - change to **Full control**

Next select – **Users**

and change the permissions for the following:

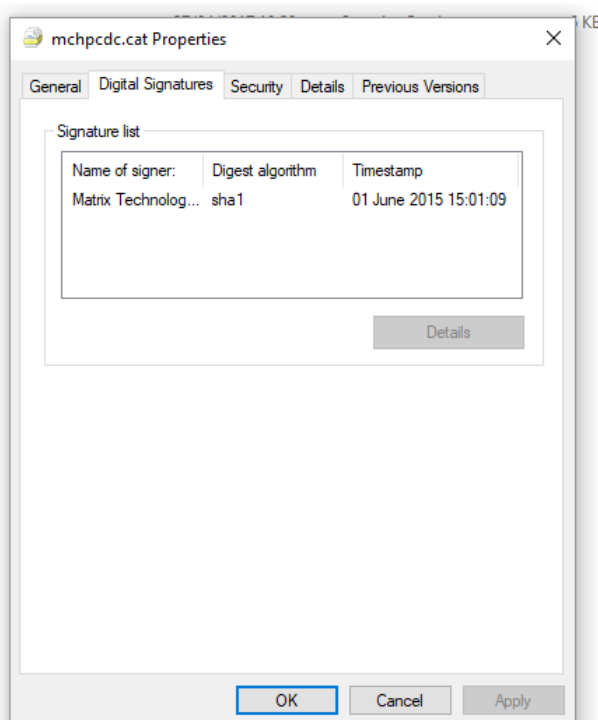
**Full Control**

**Modify**

**Write**

Click **Apply** and then **OK**

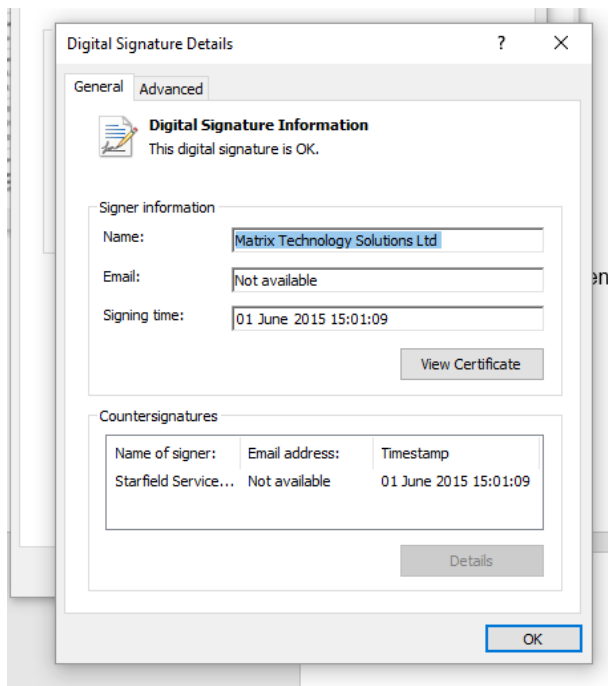
Next select – **Digital Signatures**.



Highlight the file –

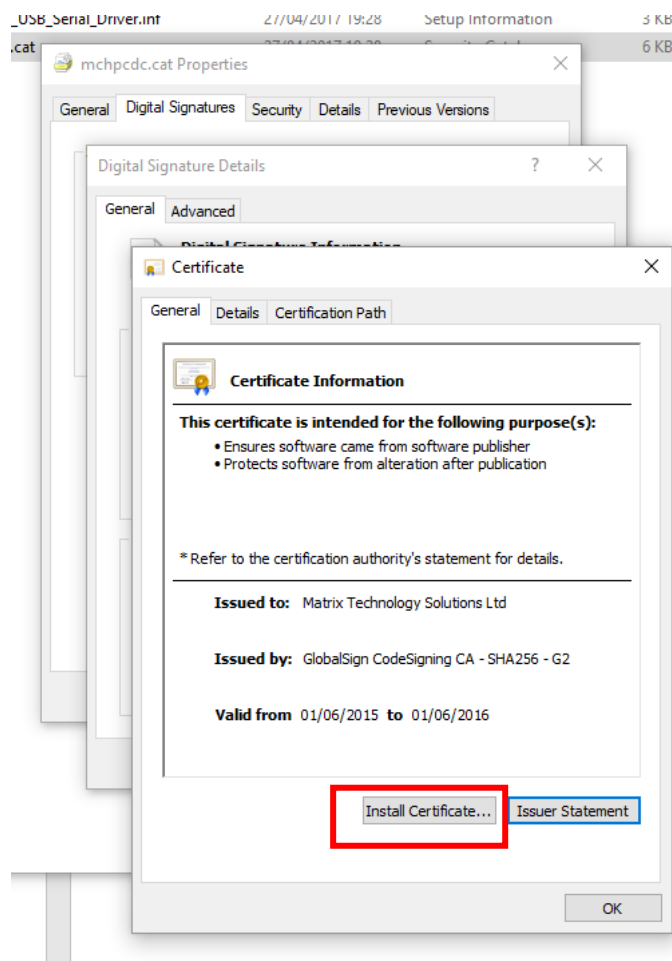
**Matrix Technology.....**

Now click **Details**.



From here we can view the certificate and select where it is to be saved. This is important, as placing this certificate in the appropriate folder allows the driver to be installed correctly.

Select – **View Certificate** - OK

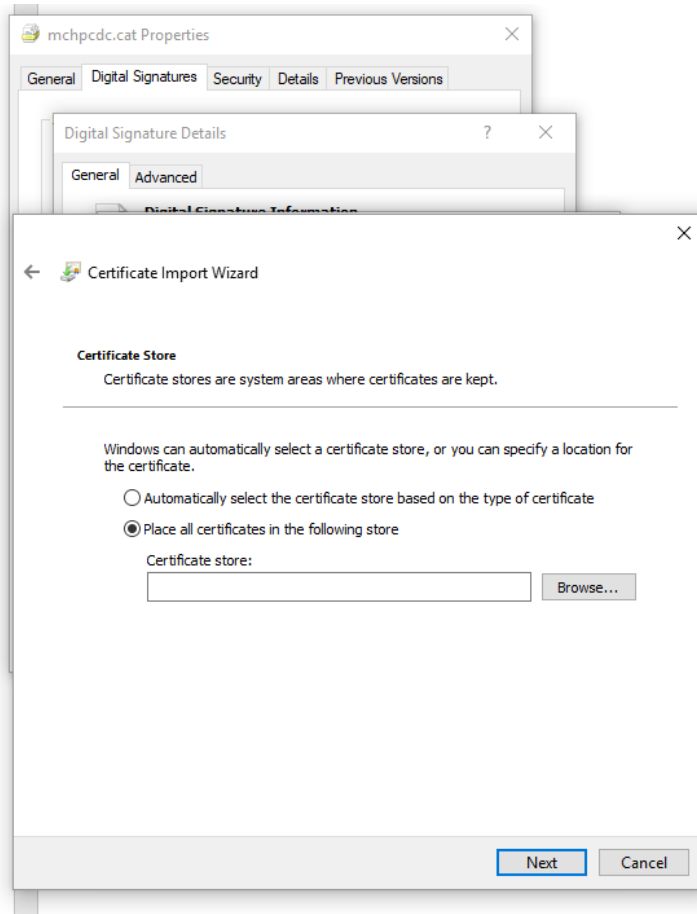


Now we can Install the Certificate.

Click – **Install Certificate** (OK)

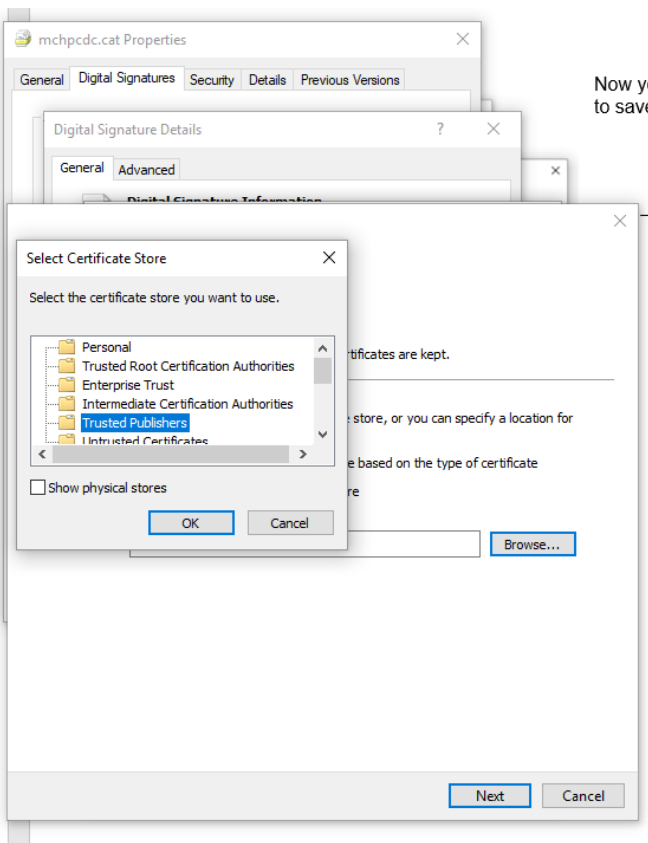
The - **Current User** (next)

**Note!** If you select local Machine you will not be able to select the appropriate folder to save the Certificate.



Now you get to choose where to save the certificate.

Click – **Browse**

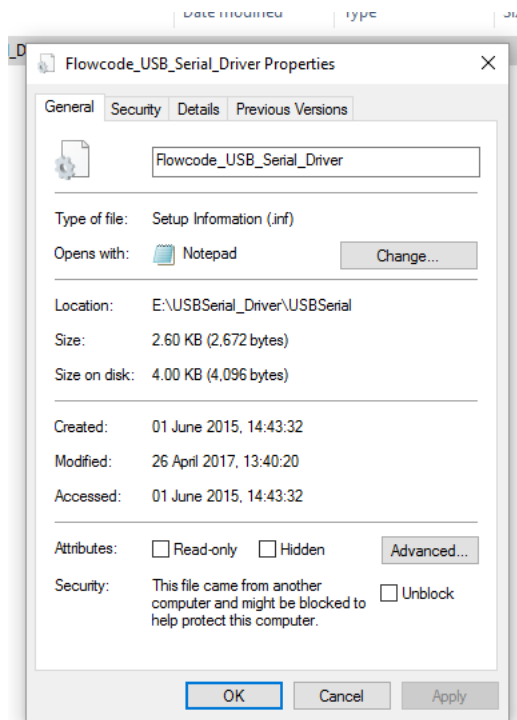


Now you  
to save

Select the folder  
– **Trusted Publishers**  
Then **OK**.

That completes the installation of the certificate. Now all we need to do install the driver.

### Step 3 –Installing the USB Driver



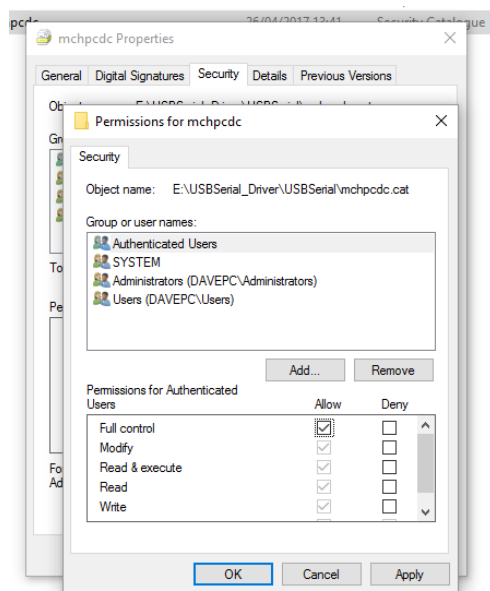
Selecting the file (right click and then properties)

***Flowcode\_USB\_Serial\_Driver***

This file **MUST** be Unblock.

Tick the Box – Unblock followed by **OK**.

Next the Security Permissions need to be changed.



Select – ***Authenticated Users***

and tick the box:

***Full Control***

Next select – ***Users***

and change the permissions for the following:

**Full Control**

**Modify**

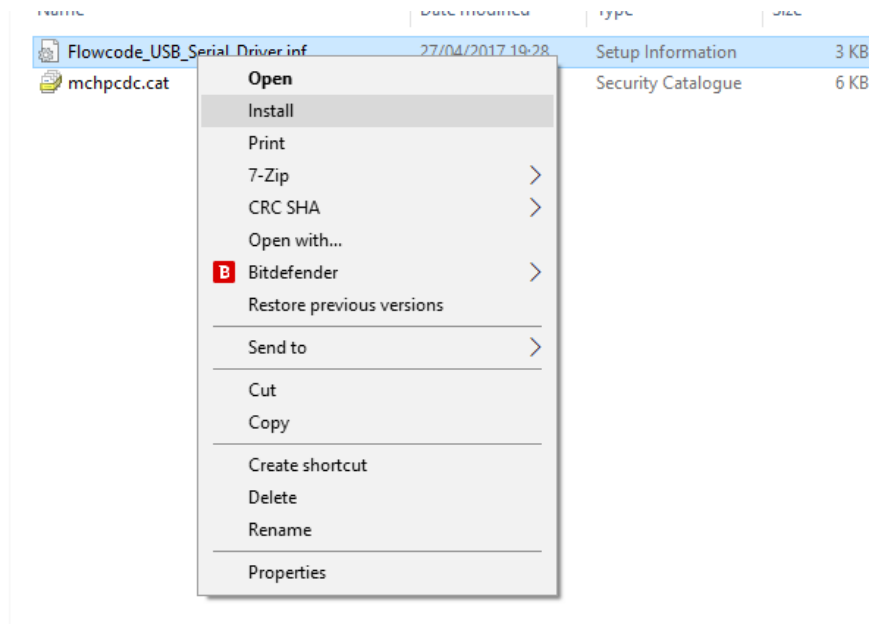
**Write**

Finish by clicking **Apply** and then **OK**.

Now the Serial USB should work correctly.

ents

tes



Install the driver.

That's it, Done.