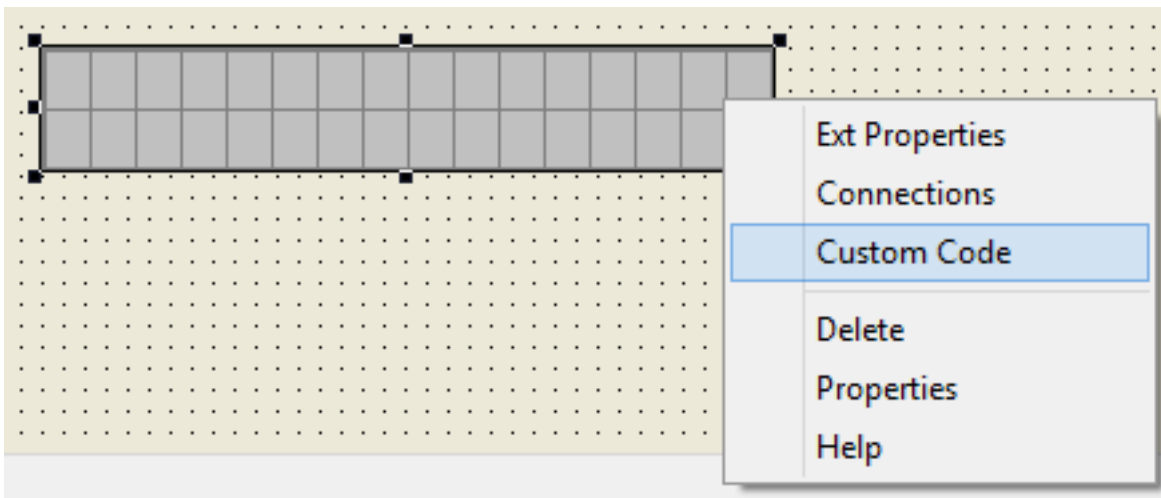


E-blocks

LCD Screen problems with EB006v9 and Flowcode 5

Due to the differences between the EB006v9 and previous versions, there are some issues with the way Flowcode v5 handles the LCD screen. There is a simple fix however.

First you will need to add the LCD component to your project, then right click and select "Custom Code".



Next select the [Defines] section and click the "**Edit code**" button.

E-blocks

Customize Component Code

Component Macros

Name	Inbuilt	Private	Customize
[Defines]	true	-	true
[Initialization]	true	-	false
[Interrupt]	true	-	false
RawSend	true	true	false
Start	true	false	false
Clear	true	false	false
PrintASCII	true	false	false
Command	true	false	false
Cursor	true	false	false

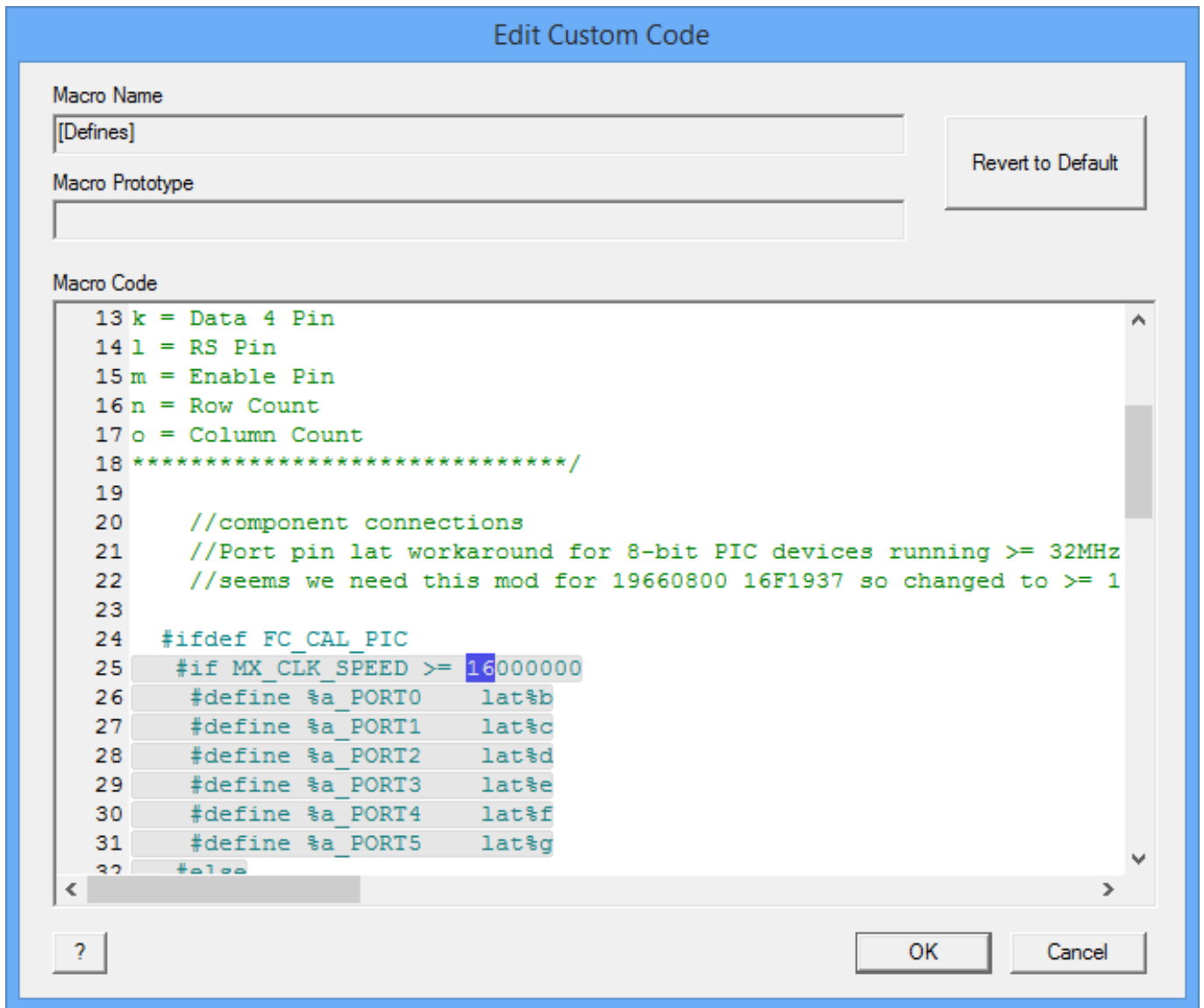
Macro Prototype

Macro Description

Buttons: New Macro, Edit Details, Edit Code, Delete Macro, Import, Export, Close, ?

Finally scroll down the c-code till you find the line "#if MX_CLK_SPEED >= 32000000". And change the **32000000** to **16000000**.

E-blocks



Finally click the **OK** button and hopefully this should fix the issue.

Unique solution ID: #1074

Author: DavidA

Last update: 2016-01-29 11:54